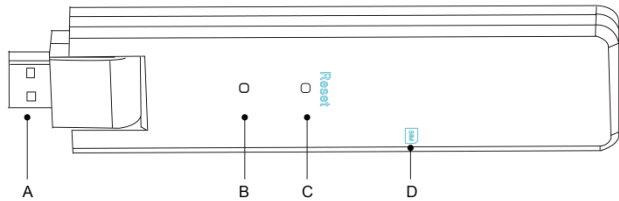


1. Interface Layout



Item	Description
A	USB Connector
B	Status Indicator
C	Reset Button
D	SIM Card Slot

2. Preparation

- A) Download the Hoymiles mobile installer App



- B) Check the box for the following items:

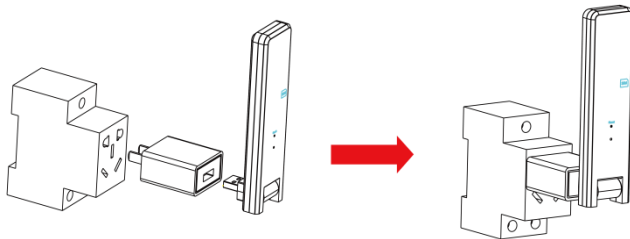
- ✓ Hoymiles DTU-G100
- ✓ Adapter

3. Installation

- A) Insert the SIM Card into the SIM Card slot.

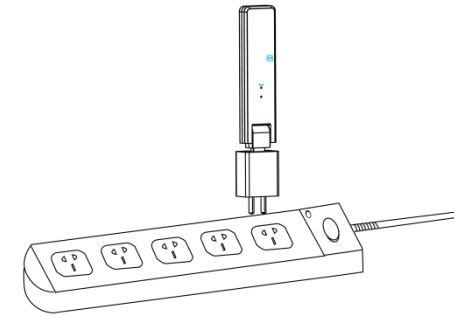
- B) Power the DTU-G100 3rd Gen

Option 1: Connect the DTU to the adapter and plug it into the wall socket



Option 2: Connect the DTU to the adapter and plug it into the Power Strip. Please

make sure it is placed at least 0.5 meter above the ground and try to install the DTU 90 degrees vertical to the ground as much as possible.



Note: Please do not install the DTU directly above the metal or concrete to prevent the signal dilution.

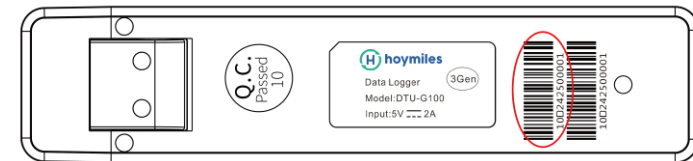
- C) Start Procedure

Once the DTU powers on, the red, green and blue lights will flash for one second in turns for 30 seconds.

4. Installation Map


Please complete the installation map.

- A) Peel the serial number label (as circled below) from the DTU and place it on the installation map.



- B) Complete system information of the installation map shown as follows.

To sheet _____

N S E W (circle cross) A ⊙	Panel Group:		Customer Information:				DTU Serial Number:							
	Azimuth:													
Tilt:		Sheet ___ of ___												
	1	2	3	4	5	6	7	8	9	10	11	12	13	14
A														
B														
C														
D														

To sheet _____

5. Online Setting

Please complete the online account creation to complete the DTU installation (You can refer to “Quick Installation Guide for HMP Online Registration” for detail account creation steps).

Note: For more setting details regarding the Local Install Assistant please acquire the related Operation Guide from our Tech. Support Team at service@hoymiles.com.

6. Warning



- Only qualified personnel can install or replace the DTU.
- Do not attempt to repair the DTU as it contains the parts that are not serviceable to users. If the DTU breaks down, please contact your distributor for maintenance. Open the DTU without permission will invalidate the warranty.

